
For Sale

Used 2500 Ton Forging Press

Description: 2 point eccentric geared straight side forging press, Air clutch and counter balance

Mechanical Condition: *Excellent!*

Electrical Condition: *Excellent!*

Manufacturer: *Bliss*

Year: *New 1980 Installed 1983*

Model: *SE2-2500-132X66*

S/N: *30237-001S/30237-001N*

Bed Size : *132" x 66"*

Stroke : *60.0"*

Slide Adjustment : *6.0"*

Cont. Speed/Work Speed: *8/4 SPM*

Window: *60"W x 96"H*

Ejector: *Yes 100 Ton*

HP: *300 HP/ 1150 RPM*

Options:

Die Lube Spraying

Auto Lube

Inching

Underground scrap conveyor

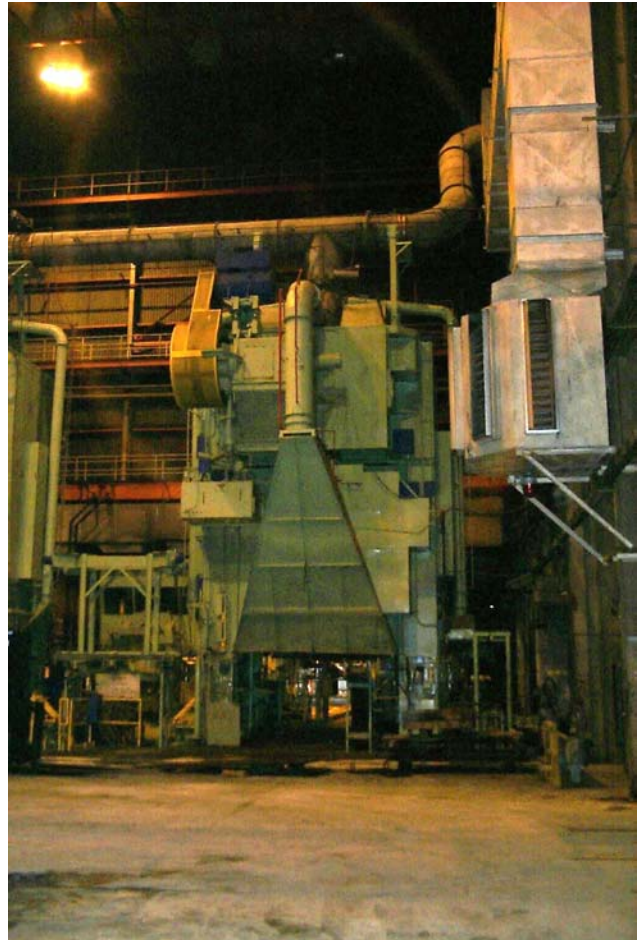
Dimensions: *49'H above/10' Below*

Machine ON time: *unknown hours*

Weight: *unknown*

Misc.: *Machine operated 1983 and ran a total of 300,000 parts between two presses. Machines were preserved. Military surplus equipment and purchaser must be U.S. company or citizen and must complete certification.*

Price: *\$ P.O.R. USD*





021302-1